

Electrabel

GDF SUEZ





Site Details:
Coo Power Station

THE COO POWER STATION

Emergencies

Prohibitions

Risks:
Hazardous products

Surface water

Piping

The environment



EVACUATION (ALARM)

In the event of an ☐ Evacuation:

☐ Assembly point

☐ = at the corner of the warehouse



□ IN AN EMERGENCY

In the case of minor injuries:

□ Sick bay:

- available on-site, next to the warehouse in front of the transformers



Please note:

no first-aid staff on-site.



□ IN AN EMERGENCY

In the case of heart problems:

□ Defibrillator:

- ✓ To the entry of control room level 222
- ✓ In the entrance to the administrative building near the security guard's room



□ IN AN EMERGENCY

In the case of flooding (Cave of Coo)

The evacuation alert (modulating siren) is also activated.

Evacuate the cave immediately.



□ IN AN EMERGENCY

4444 from 07:00am to 18h00 pm

Outside working hours

Phone 112 with a mobile phone or 0112 with a landline phone and notify the security staff (see sheet on entrance door of administrative building).

Intervention at the other sites of Coo

In the event of problems (injured staff, fire ...) during an intervention at the other sites (Robertville, Butgenbach, Bévercé, Stavelot, Heid de Goreux, Lorcé, Cierreux, La Vierre and Orval) **always phone 112 for help and notify the works manager**



PROHIBITIONS



Water from the mains is not drinking water.

For drinking, use the fountains or bottled water.



Vehicles with LPG are prohibited in the cave.



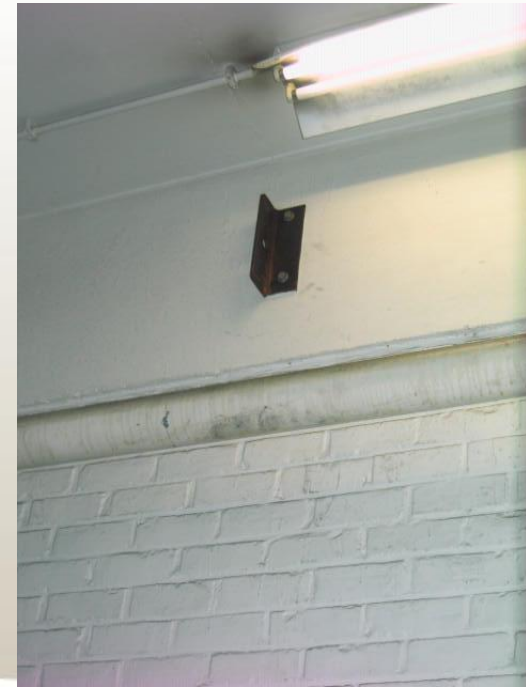
Do not park vehicles in the tunnels.

If you are granted permission to do so, vehicles must be parked facing the exit, the key must be left in the ignition and the doors must remain unlocked.



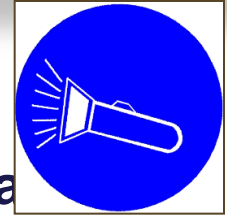
POINTS D'ACCROCHAGE

- Not all harness attachment points undergo quarterly checks. Before using an attachment point inform the works foreman, who will have the check performed if necessary.



□ EQUIPMENT

Personal Protective Equipment (PPE):



- **Pocket flash light is mandatory in all technical facilities and specifically in the cave of Coo and the dam of Robertville.**

- **A gas detector (O₂ or multi-gas) must be worn at all times, in particular for all interventions in the various galleries and shafts:**
 - drains of upper basins 1 & 2, upstream & downstream dams
 - water intake north platform

But also for all interventions at:

- the penstocks of Bévercé and La Vierre
- The base sluice of the dam of Robertville



RISKS

Suffocation:

- ❑ **Risk:** Considering the configuration and the inadequate ventilation in some galleries, the O₂ oxygen level could be <19%.
- ❑ **Prevention:** Risk analysis + compulsory work permit
- ❑ **Protection:** Wear gas detector
Presence of certain permanent measurement shafts



❑ Multi-gas detector



Detector
O₂



❑ Permanent O₂ measuring devices



RISKS

Chemicals:

- **Presence of Na_2CO_3** (Sodium carbonate) solution in the rheostats

Remember: □ In case of leakage, emergency call: 4444



In the event of splashes, rinse thoroughly.

Toxic and hazardous products

- **Machine room: SF₆** (sulphur hexafluoride) in the 20 kV circuit breakers gas affecting the ozone layer



RISKS

Surface water:

- **Risk:** Contamination by biological agents
- **Prevention:** Risk analysis + compulsory work permit
- **Protection:** Waterproof garment with helmet and visor
 - Wear a mask or hood
 - Gloves
- **After the intervention:** clean/disinfect



ENVIRONMENT

Special note for 2 sites near Coo: Robertville and La Vierre

They are located on the edge of NATURA 2000 sites. All work at these sites or in the surrounding area is strictly regulated



- Prior to any work, the CARE Environment department must be consulted.

